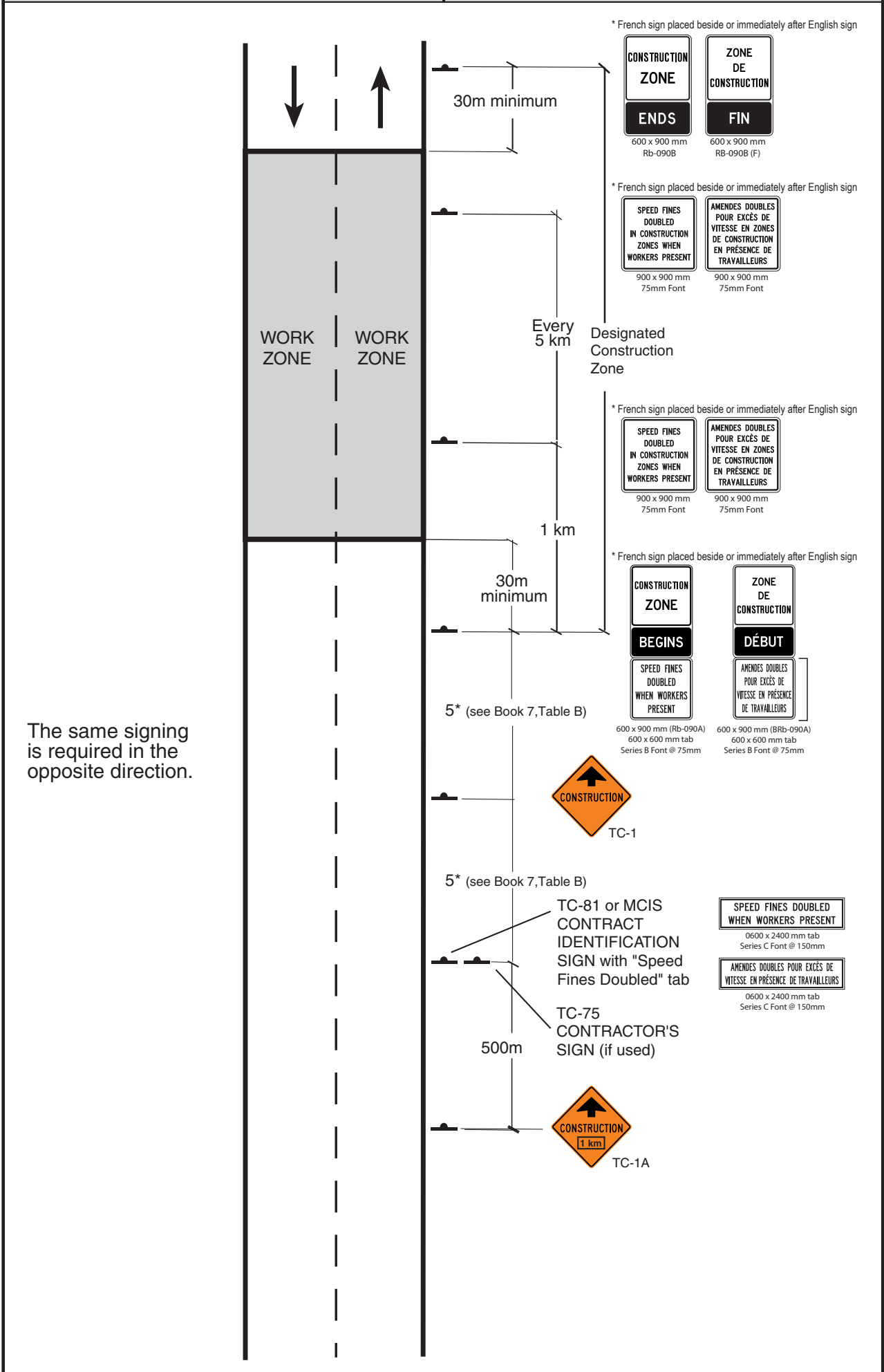


Schedule A - Provincial Roads

Two Lane Road
Multi-Lane Road
(Non-Freeway Undivided)

Long Duration

****NOTE:**
This layout is to illustrate the placement of the new speed fine signs. It does not replace Figure TL-1 in OTM Book 7 - Construction Zone Advisory Signing.



Construction Zone Speed Fines
Sign Layout - Non-Freeway
(Provincial Roads)

 **Ontario**
Ministry of Transportation
The Traffic Office
Traffic Operations Engineering Section

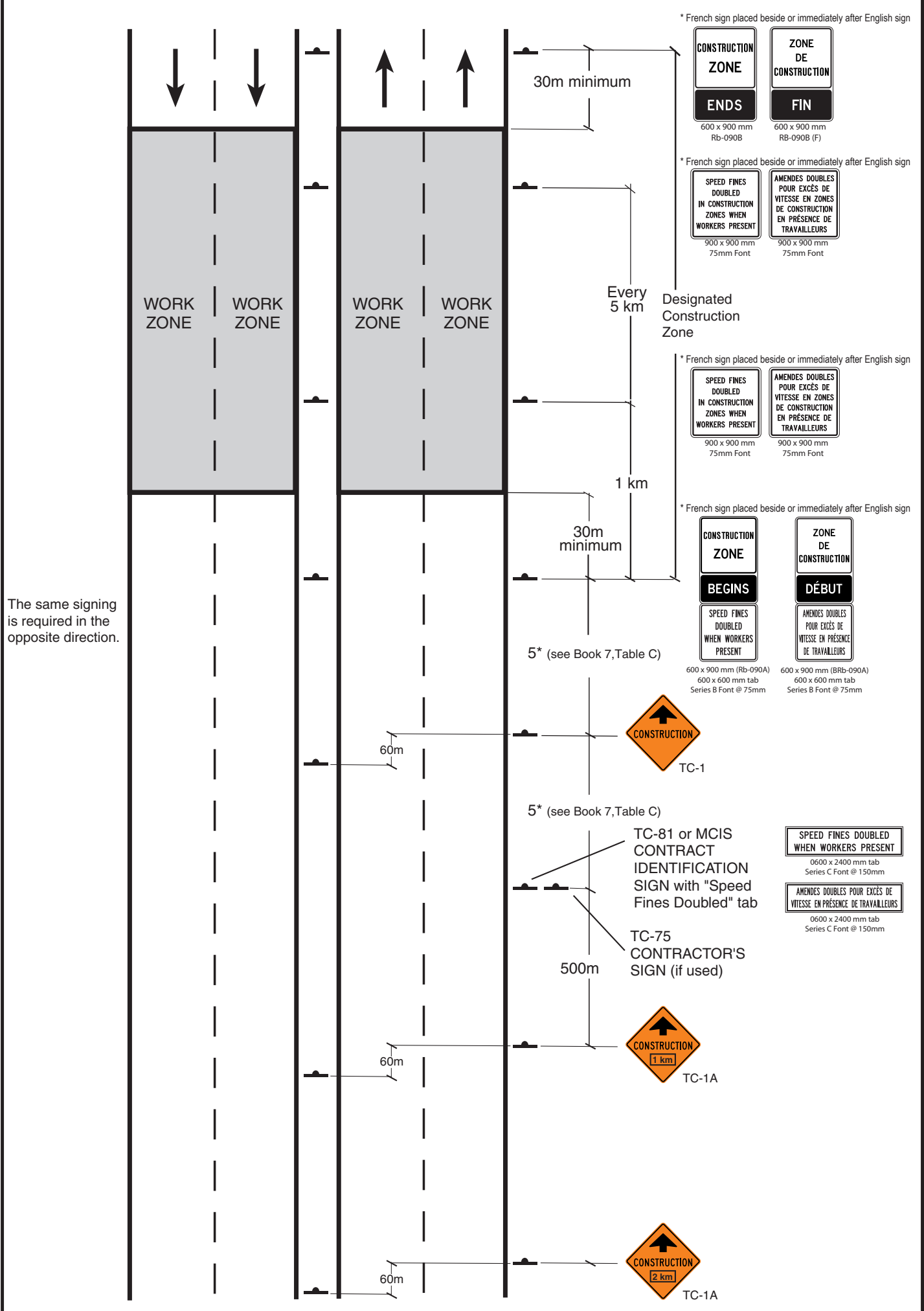
May 5, 2006

Schedule B - Provincial Roads

Multi-Lane Road (Divided Freeway)

Long Duration

****NOTE:**
This layout is to illustrate the placement of the new speed fine signs. It does not replace Figure TL-2 in OTM Book 7 - Construction Zone Advisory Signing.



Construction Zone Speed Fines Sign Layout - Freeway (Provincial Roads)



Ministry of Transportation

The Traffic Office

Traffic Operations Engineering Section

May 5, 2006